



LONDON COLLEGE OF HIGHER EDUCATION

UK Register of Learning Providers
UKPRN: 10081703

Build your career with the **RIGHT** education

<https://londoncollege.ac>

PROSPECTUS

WE PROVIDE YOU:

- Pathway to UK's Top Universities MBAs, Degrees and Diploma
- Get your degree from a range of UK, USA and Australian Universities
- Study at our Branch Campuses for UK's Top Universities Awards
- Study Full time, Part time or Distance Learning

Registered Office Address:

71-75 Shelton Street, Covent Garden,
London WC2H 9JQ, United Kingdom

(Registered entity of College of Advanced Education London Ltd, a private institution registered under the Companies House of United Kingdom (Company No: 11622459))



ABOUT US

The London College of Higher Education (LCHE) an entity of College of Advanced Education, London Ltd is a private institution registered under the Companies House of United Kingdom. LCHE aims to be the best academic centre in London offering various international qualifications, knowledge, skills and values students need for success in the international job market and to be on top of their industries. London College of Higher Education offer reputed ATHE certified awards which are relevant to the modern job market and to gain international employment opportunities.

London College of Higher Education is offering a broad range of vocational, professional and academic programmes. Our lecturers are experienced, appropriately qualified and highly motivated. Our teaching staff use the very latest equipment to deliver our courses and also keep up to date with all the latest techniques in teaching.

In addition to the outstanding teaching and training you will receive at London College of Higher Education, excellent support, with guidance on courses and advice on progression, and help at every step of the way.

Our courses are designed to guarantee learner satisfaction and the qualifications we offer are relevant, worthwhile and widely recognised by employers and universities. They will genuinely enhance your employability and increase your life opportunities.

MISSION STATEMENT

Learners are at the heart of everything we do at London College of Higher Education. We create success built on the excellence of our teaching and quality of our courses. We create opportunities. We create better futures

AIMS

- To be known for excellence in teaching, learning and assessment that leads to outstanding success for the learners
- To ensure all our learners have access to RIGHT education with the best learning environment
- To prioritise learner needs and required progression for a successful completion of their studies



WHY STUDY WITH US?

Every year, London College of Higher Education helps hundreds of young people from around the world to study and to be awarded qualifications from a range of UK's Top Universities

Trusted Education Network

London College of Higher Education has helped ambitious international students to benefit from an outstanding university education in the UK and elsewhere. Today a growing network of UK Universities through ATHE trust us to prepare students like you for their undergraduate and postgraduate degree courses. Our expert teams will help you adapt to a new country, master a different education system and gain valuable experiences that will last a lifetime.

Progression pathway available

We understand that an international education is a big investment – and that's why we give every student a promise: if you pass your pathway programme with us, you will progress to study your degree at a UK university. Many of our students complete their programme and degree at the same university. But even if your plans change, or your marks aren't what you expect, you will always have lots of options for a world-class education. So whatever your academic goals are, we can help prepare you for life at university.

Student Support

From the moment you decide to study in the UK, we are here to help. Our specialist study advisors have helped thousands of international students just like you to settle into life at university.





COLLEGE STRATEGY - AIMS AND OBJECTIVE

Our strategy ensures our students, academics and partners continue to enjoy excellent education services to meet the quality and demand from the industries



To provide academic and professional qualifications based on international standard and industry relevant

To ensure students receive sufficient resources and assistance in accordance to their studies

To adopt best practices in governance and administration to ensure a progressive environment for all stakeholders.

To ensure sustainability and recognition at all continents and regions in the world.



OUR UNDERGRADUATE PROGRAMS AND POSTGRADUATE PREPARATORY PROGRAMS



Business & Management



Economic & Finance



Human Resource Management



Information Technology



Teacher Training

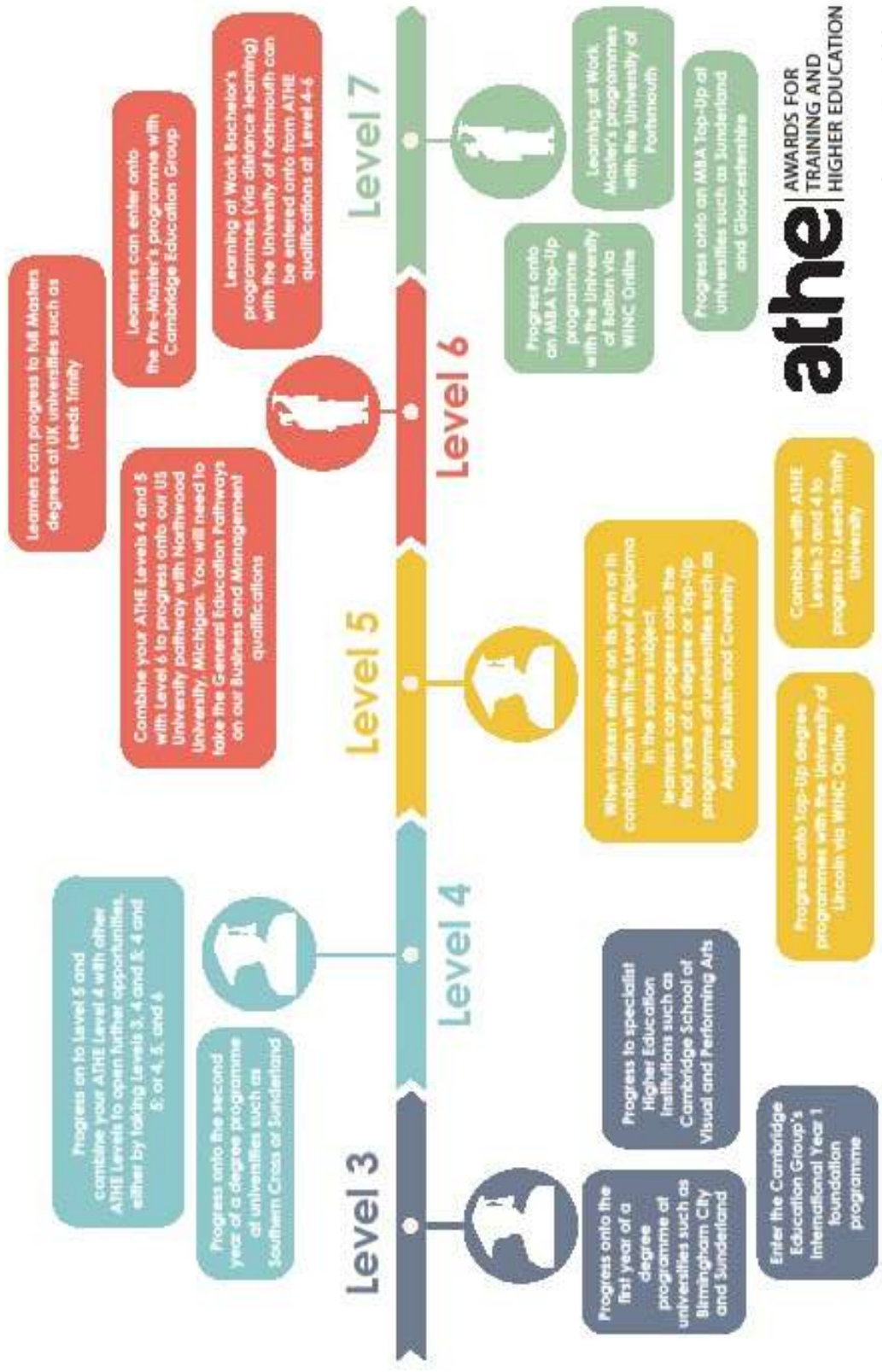


English Courses





OUR PROGRESSION ROUTES



athe AWARDS FOR TRAINING AND HIGHER EDUCATION

Centre ID: 1033

• Source: <https://athe.co.uk/>



PROGRESSION ROUTES WITH UNIVERSITIES



ATHE learners can reduce the amount of time and money they spend on achieving degrees by more than half. This is because ATHE has special arrangements with a range of universities that enables learners to skip an entire year's study of the degrees for every level they achieve with ATHE.

The following progression routes have all been arranged and confirmed between ATHE and each university, however you can also apply to universities which are not on this list as many others accept ATHE qualifications as they are regulated by The Office of Qualifications and Examinations Regulation (Ofqual) of United Kingdom.

Universities in UK

- The University of Northampton, UK
- Anglia Ruskin University, UK
- University of Gloucestershire, UK
- University of Sunderland, UK
- Birmingham City University, UK
- University of Prince Edward Island, UK
- Coventry University, UK
- University of Bedfordshire, UK
- Leeds Trinity University, UK
- University of Portsmouth, UK
- Southampton Solent University, UK
- University of Lincoln, UK
- Cambridge Education Group, UK

Universities in USA

- Northwood University, Michigan, USA

Universities in Australia

- Southern Cross University, Australia

Universities in Ireland

- Limerick Institute of Technology, Ireland
- Institute of Technology, Carlaw, Ireland

athe AWARDS FOR
TRAINING AND
HIGHER EDUCATION
Centre ID: 1033

- Source: <https://athe.co.uk/>

